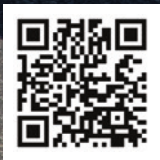




MEDICAL

SPRING 2024 BUYERS GUIDE





MEDICAL



06

EDS ESSENTIALS

12

EDS SIGNATURE

18

BALANCE

26

DYNAMIX

30

PRINTS

34

LAB COATS

38

FIT GUIDE / MATRIX FOLDER



Reflecting the brand's trademark style and distinct design elements, Dickies Medical delivers a smart, savvy lineup of scrubs and uniforms for hardworking, style-conscious healthcare pros.

Cover, CAMILLE is wearing
EDS Essentials DK615 V-Neck Top
in Olive (OLV)

Above, Balance DK224 Mid
Rise Jogger Pant in Royal
(ROY)

“When I see Dickies products, the three things that come to mind are durability, accessibility, and an iconic image for workwear.”

SCOTTY
MRI TECHNOLOGIST





SCOTTY is wearing
DK610 V-Neck Top + DK110
Natural Rise Zip Fly
Cargo Pant in Caribbean
Blue(CAR)

EDS ESSENTIALS



4-WAY STRETCH



STRONG & DURABLE



EASY CARE

The blueprint for strong yet stylish scrubs, the popular and practical EDS Essentials line knows what pros want and workers need. All with a look that's unmistakably Dickies.



Left page, JOCELYN is wearing DK615 V-Neck Top + DK005 Natural Rise Tapered Leg Pull-on Pant in Wine (WNPS) // Above, DK615 V-Neck Top + DK065 Mid Rise Jogger in Heather Royal (HTRL) // Bottom right, VAUGHN is wearing DK635 V-Neck Top + DK015 Natural Rise Drawstring Pant in Hunter Green (HNPS)



**NEW
STYLE**



DK342 Men's Zip
Front Jacket in
Black (BAPS)

DK615

V-Neck Top



Available colors:

Black BAPS†	Navy NYPS†	Pewter PWPS†
Royal RYPS†	Wine WNPS†	Caribbean Blue CAPS†
Ciel CIPS†	White WTPS†	Hunter Green HNPS
Teal Blue TLPS	Galaxy Blue GAB	Red RED
Eggplant EGG	Olive OLV	Hot Pink HPKZ
Turquoise TRQ	Orchid Frost OCFO*	Ravishing Coral PWCO*

Sizes:
XXS-5XL (26")

Fabric:
95 Poly/5 Spandex Heathered Poplin

- Contemporary fit
- Twill tape at neckline
- Two patch pockets
- Pen slot with utility twill tape
- Instrument loops inside left pocket
- Shoulder yokes
- Instrument loops with snap at right shoulder
- Back princess seams
- Signature logo twill tape at the back neck

New Color:

Heather Royal HTRL*

DK341

Zip Front Moto Style Jacket



Available color:

Black BAPS*

Sizes:
XS-2XL (26")

Fabric:
95 Poly/5 Spandex Poplin

- Contemporary fit
- Banded collar with snap closure
- Two front angled pockets with twill tape trim
- Stylized front princess seams
- Rib-knit cuffs
- High-low hemline

DK641

V-Neck Top



Available colors:

Black Frost BAPS	Navy NYPS	Orchid Frost OCFO*
---------------------	--------------	-----------------------

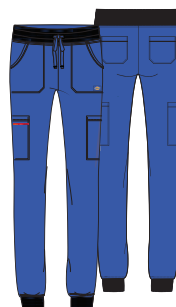
Sizes:
XS-2XL (26")

Fabric:
95 Poly/5 Spandex Poplin

- Contemporary fit
- Three pockets: chest pocket, two front angled patch pockets
- Twill tape at neckline and front pocket hems
- Signature logo twill tape at the back neck
- Back yoke and princess seams
- Rounded hem
- Side vents

DK065/P/T

Mid Rise Jogger



Available colors:

Black BAPS	Navy NYPS	Pewter PWPS
Royal RYPS	Wine WNPS	Caribbean Blue CAPS
Ciel CIPS	White WTPS	Hunter Green HNPS
Teal Blue TLPS	Galaxy Blue GAB	Olive OLV

Sizes:
XXS-5XL (29")
[P] XXS-3XL (26.5")
[T] XS-2XL (32")

Fabric:
95 Poly/5 Spandex Poplin

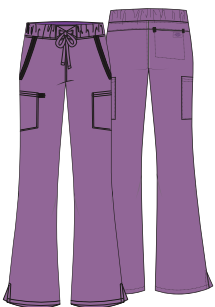
- Contemporary fit
- Rib-knit covered elastic waistband with drawstring
- Six pockets: two front patch pockets, two cargo pockets, two back pockets
- Logo tape instrument loops inside right cargo pocket
- Rib-knit cuffs
- Tapered leg, 12" opening

New Color:

Heather Royal HTRL*

DK241/P

High Rise Drawstring Cargo Flare Pant



Available colors:

Black Frost BAPS*	Navy NYPS*	Orchid Frost OCFO*
----------------------	---------------	-----------------------

Sizes:
XS-2XL (30.5")
[P] XS-2XL (28")

Fabric:
95 Poly/5 Spandex Poplin

- Contemporary fit
- Boxer-style interior elastic waistband with drawstring
- Five pockets: two front pockets with twill tape trim, two cargo pockets, back in-seam pocket
- Side vents
- Flare leg, 20" opening

DK342: NEW STYLE

Men's Zip Front Jacket



Available colors:

Black BAPS*	Navy NYPS*	Pewter PWPS*
Royal RYPS*		

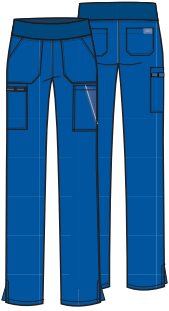
Sizes:
XS-5XL (29")

Fabric:
95 Poly/5 Spandex Poplin

- Men's fit
- Stand-up collar
- Three pockets: in-seam chest pocket, two angled pockets
- Stylized front seams
- Elasticized cuffs

DK005/P/T

Natural Rise Pull-on Cargo Pant



Available colors:

Black BAPS	Navy NYPS	Pewter PWPS		
Royal RYPS	Wine WNPS	Caribbean Blue CAPS		
Ciel CIPS	White WTPS	Hunter Green HNPS	Teal Blue TLPS	Galaxy Blue GAB
Red RED	Eggplant EGG	Olive OLV	Hot Pink HPKZ	Turquoise TRQ

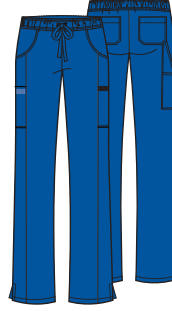
Sizes:
XXS-5XL (30")
[P] XXS-3XL (27.5")
[T] XS-2XL (33")

Fabric:
95 Poly/5 Spandex Poplin

- Contemporary fit
- Rib-knit covered elastic waistband
- Seven pockets: two front patch pockets, two cargo pockets, accessory pocket, two back patch pockets
- Utility twill tape instrument loops on right cargo pocket
- Side vents
- Tapered leg, 15" opening

DK010/P/T

Mid Rise Drawstring Pant



Available colors:

Black BAPS†	Navy NYPS†	Pewter PWPS†		
Royal RYPS†	Wine WNPS†	Caribbean Blue CAPS†		
Ciel CIPS†	White WTPS†	Hunter Green HNPS		
Teal Blue TLPS	Hot Pink HPKZ			

Sizes:
XXS-5XL (30.5")
[P] XXS-3XL (28")
[T] XS-2XL (33.5")

Fabric:
95 Poly/5 Spandex Poplin

- Contemporary fit
- Elastic waistband with drawstring
- Seven pockets: two front pockets, two cargo pockets, accessory pocket, two back pockets
- Side vents
- Straight leg, 17" opening

DK625

Mock Wrap Top



Available colors:

Black BLK	Navy NYPS	Pewter PWPS		
Royal RYPS	Wine WNPS	Caribbean Blue CAPS		
Ciel Blue CIPS	White WTPS	Hunter Green HNPS		
Teal Blue TLPS	Galaxy Blue GAB			

Sizes:
XXS-5XL (26")

Fabric:
95 Poly/5 Spandex Poplin

- Contemporary fit
- Shoulder yokes
- Instrument loops at right shoulder
- Two patch pockets
- Pen slot with utility twill tape
- Instrument loops and bungee loop at left pocket
- Signature logo twill tape inside back neck
- Side vents

DK619

Unisex V-Neck Top



Available colors:

Black BAPS	Navy NYPS	Pewter PWPS		
Royal RYPS	Wine WNPS	Ciel CIPS		
Hunter Green HNPS	Galaxy Blue GAB			

Sizes:
XXS-5XL (28")

Fabric:
95 Poly/5 Spandex Poplin

- Unisex fit
- Twill tape at neckline
- Two front patch pockets
- Back yoke seam
- Signature logo twill tape inside back neck
- Side vents

DK305

Snap Front Warm-up Jacket



Available colors:

Black BAPS	Navy NYPS	Pewter PWPS		
Royal RYPS	Wine WNPS	Caribbean Blue CAPS		
Ciel Blue CIPS	White WTPS	Hunter Green HNPS		
Teal Blue TLPS				

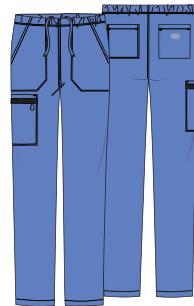
Sizes:
XXS-5XL (27")

Fabric:
95 Poly/5 Spandex Poplin

- Contemporary fit
- Shoulder yokes and back princess lines
- Instrument loops with snap at right shoulder
- Two patch pockets
- Pen slot with utility twill tape
- Signature logo twill tape inside back neck
- Rib-knit cuffs

DK019/S/T

Unisex Natural Rise Drawstring Pant



Available colors:

Black BAPS	Navy NYPS	Pewter PWPS		
Royal RYPS	Wine WNPS	Ciel CIPS		
Hunter Green HNPS	Galaxy Blue GAB			

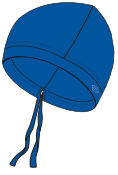
Sizes:
XXS-5XL (31")
[S] XXS-3XL (28.5")
[T] XS-2XL (34")

Fabric:
95 Poly/5 Spandex Poplin

- Unisex fit
- Interior elastic waistband with inside drawstring
- Five pockets: two front pockets, cargo pocket, two back pockets
- Twill tape utility loops with bungee badge ID loop on cargo pocket
- Tapered leg, 15" opening

DK502

Unisex Scrubs Hat



Available colors:

Black BAPS	Navy NYPS	Pewter PWPS
Royal RYPS		

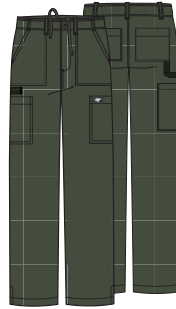
Sizes:
OS

Fabric:
95 Poly/5 Spandex Poplin

- Unisex fit
- Adjustable drawstring
- Hidden terry-cloth band for comfort
- Signature tonal woven label

DK015/S/T

Natural Rise Drawstring Pant



Available colors:

Black BAPS†	Navy NYPS†	Pewter PWPS†		
Royal RYPS†	Wine WNPS†	Caribbean Blue CAPS†		
Ciel CIPS†	White WTPS†	Hunter Green HNPS	Teal Blue TLPS	
Galaxy Blue GAB	Red RED	Eggplant EGG	Olive OLV	

Sizes:
XS-5XL (32")
[S] XS-3XL (29.5")
[T] S-3XL (35")

Fabric:
95 Poly/5 Spandex Poplin

- Men's fit
- Back elastic waistband with inside drawstring
- Zip fly with button closure
- Five belt loops
- Six pockets: two front patch pockets, two cargo pockets, two back pockets
- Twill tape utility loop and instrument loops
- Straight leg, 17" opening

DK645

V-Neck Top



Available colors:

Black BAPS	Navy NYPS	Pewter PWPS
Wine WNPS	White WTPS	Hunter Green HNPS
Galaxy Blue GAB		

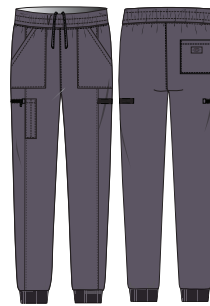
Sizes:
XS-5XL (29")

Fabric:
95 Poly/5 Spandex Poplin

- Men's fit
- Four pockets: chest pocket with pen slot, two patch pockets, accessory pocket
- Utility twill tape instrument loops on right pocket
- Signature logo twill tape inside back neck
- Side vents

DK223/S

Mid Rise Jogger



Available colors:

Black BAPS	Navy NYPS	Pewter PWPS
Royal RYPS	Wine WNPS	Caribbean Blue CAPS
Ciel Blue CIPS		

Sizes:
XS-5XL (30.5")
[S] XS-3XL (28")

Fabric:
95 Poly/5 Spandex Poplin

- Men's fit
- Elastic waist with inside drawstring
- Five pockets: two front pockets, utility pocket, zip cargo pocket, back pocket
- Twill tape instrument loops
- Front leg seams
- Rib-knit cuffs
- Tapered leg, 10½" opening

DK635

V-Neck Top



Available colors:

Black BAPS†	Navy NYPS†	Pewter PWPS†		
Royal RYPS†	Wine WNPS†	Caribbean Blue CAPS†		
Ciel CIPS†	White WTPS†	Hunter Green HNPS	Teal Blue TLPS	
Galaxy Blue GAB	Red RED	Eggplant EGG	Olive OLV	

Sizes:
XS-5XL (28")

Fabric:
95 Poly/5 Spandex Poplin

- Men's fit
- Chest pocket
- Pen slot with utility twill tape
- Utility twill tape instrument loops on left sleeve
- Back yoke and center back seam
- Signature logo twill tape inside back neck
- Side vents



Indicates: * Fashion Color | † Available in 6XL | | Fashion colors are not reorderable.

EDS SIGNATURE



SIGNATURE
STYLING



STRONG &
DURABLE



EASY
CARE

EDS Signature is expertly designed with ultra-soft yet durable fabric, flattering silhouettes, ample storage, and inclusive sizing - the effortless choice for a refined and casual look.



Above, VAUGHN is wearing 81906 V-Neck Top + 81006 Zip Fly Pull-on Pant in Grey (GRWZ)



Above, MARISSA is wearing 86706 V-Neck Top in Eggplant (EGWZ)



BACK TO BASICS



85906 V-Neck Top
in Eggplant (EGWZ)

86706

V-Neck Top



Available colors:

Black BLWZ	Navy NVWZ	Pewter PTWZ	
Royal ROWZ	Wine WIWZ	Caribbean Blue CAWZ	
Ciel CIWZ	White WHWZ	Hunter Green HUWZ	
Teal Blue TLWZ	Galaxy Blue GBWZ	Red REWZ	
Eggplant EGWZ	Olive OLWZ	Grey GRWZ	Dark Khaki KHIZ

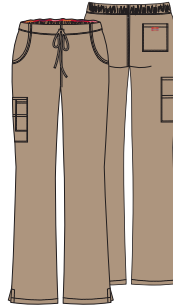
Sizes:
XXS-5XL (27")

Fabric:
Brushed 55 Cotton/45 Poly Poplin

- Modern Classic fit
- Two patch pockets
- Red knit interior pocket (White for White)
- Logo twill tape inside back neck
- Side vents

86206/P/T

Mid Rise Drawstring Cargo Pant



Available colors:

Black BLWZ	Navy NVWZ	Pewter PTWZ	
Royal ROWZ	Wine WIWZ	Caribbean Blue CAWZ	
Ciel CIWZ	White WHWZ	Teal Blue TLWZ	
Galaxy Blue GBWZ	Dark Khaki KHIZ		

Sizes:
XXS-5XL (30.5")
[P] XXS-2XL (28")
[T] XS-2XL (33.5")

Fabric:
Brushed 55 Cotton/45 Poly Poplin

- Modern Classic fit
- Back elastic waistband with drawstring
- Six pockets: two front pockets, cargo pocket with Red knit interior pocket (White for White), sectional pocket, back pocket
- Side vents
- Moderate flare leg, 19½" opening

85906

V-Neck Top



Available colors:

Black BLWZ	Navy NVWZ	Pewter PTWZ	
Royal ROWZ	Wine WIWZ	Caribbean Blue CAWZ	
Ciel CIWZ	White WHWZ	Hunter Green HUWZ	
Teal Blue TLWZ	Galaxy Blue GBWZ	Red REWZ	
Eggplant EGWZ	Grey GRWZ	Dark Khaki KHIZ	

Sizes:
XXS-3XL (26")

Fabric:
Brushed 55 Cotton/45 Poly Poplin

- Contemporary fit
- Six pockets: two patch pockets, four accessory pockets
- Instrument loops on right pocket
- Back princess seams
- Logo twill tape inside back neck
- Side vents

86306

Snap Front Warm-up Jacket



Available colors:

Black BLWZ	Navy NVWZ	White WHWZ
---------------	--------------	---------------

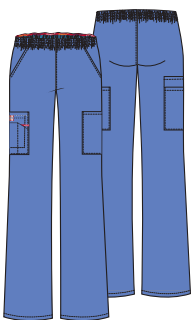
Sizes:
XS-5XL (28.5")

Fabric:
Brushed 55 Cotton/45 Poly Poplin

- Modern Classic fit
- Six pockets: double patch pockets, pen slot, accessory pocket, Red knit interior pocket (White for White)
- Instrument loops on left pocket
- Back yoke
- Knit cuffs
- Side vents

86106/P/T

Natural Rise Pull-on Cargo Pant



Available colors:

Black BLWZ	Navy NVWZ	Pewter PTWZ	Royal ROWZ	Wine WIWZ	
Caribbean Blue CAWZ	Ciel CIWZ	White WHWZ	Hunter Green HUWZ	Teal Blue TLWZ	
Galaxy Blue GBWZ	Red REWZ	Eggplant EGWZ	Olive OLWZ	Grey GRWZ	Dark Khaki KHIZ

Sizes:
XXS-5XL (30.5")
[P] XXS-2XL (28")
[T] XS-2XL (33.5")

Fabric:
Brushed 55 Cotton/45 Poly Poplin

- Modern Classic fit
- All-around elastic waistband
- Six pockets: two front pockets, two cargo pockets, sectional pocket, Red knit interior pocket (White for White)
- Instrument loops
- Tapered leg, 16½" opening

83706

Unisex V-Neck Top



Available colors:

Black BLWZ	Navy NVWZ	Pewter PTWZ	Royal ROWZ
Wine WIWZ	Caribbean Blue CAWZ	Ciel CIWZ	White WHWZ
Hunter Green HUWZ	Teal Blue TLWZ	Galaxy Blue GBWZ	Red REWZ
Eggplant EGWZ	Olive OLWZ	Grey GRWZ	Dark Khaki KHIZ

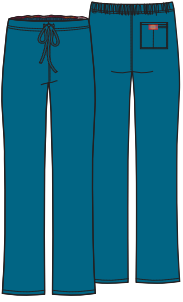
Sizes:
XS-5XL (28")

Fabric:
Brushed 55 Cotton/45 Poly Poplin

- Unisex fit
- Chest pocket
- Bartacked pen slot
- Logo twill tape inside back neck
- Side vents

83006/S/T

Natural Rise Drawstring Pant



Sizes:
XS-5XL (31")
[S] XS-2XL (28.5")
[T] XS-2XL (34")

Fabric:
Brushed 55 Cotton/45 Poly Poplin

- Unisex fit
- Adjustable drawstring
- Back pocket with Galaxy Blue knit interior pocket (White for White)
- Straight leg, 20" opening

Available colors:

Black BLWZ	Navy NVWZ	Pewter PTWZ	Royal ROWZ
Wine WIWZ	Caribbean Blue CAWZ	Ciel CIWZ	White WHWZ
Hunter Green HUWZ	Teal Blue TLWZ	Galaxy Blue GBWZ	Red REWZ
Eggplant EGWZ	Olive OLWZ	Grey GRWZ	Dark Khaki KHIZ

81906

V-Neck Top



Sizes:
S-5XL (29")

Fabric:
Brushed 55 Cotton/45 Poly Poplin

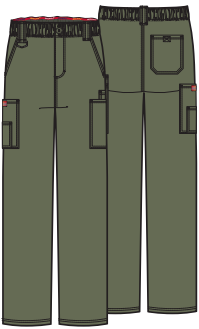
- Men's fit
- Five pockets: double chest pocket with self-strap and D-ring, two patch pockets, Galaxy Blue knit interior pocket (White for White)
- Shoulder and back yokes
- Center back seam
- Side vents

Available colors:

Black BLWZ	Navy NVWZ	Pewter PTWZ
Royal ROWZ	Wine WIWZ	Caribbean Blue CAWZ
Ciel CIWZ	White WHWZ	Hunter Green HUWZ
Olive OLWZ	Grey GRWZ	Dark Khaki KHIZ

81006/T

Zip Fly Pull-on Pant



Sizes:
S-5XL (31.5")
[T] S-3XL (34.5")

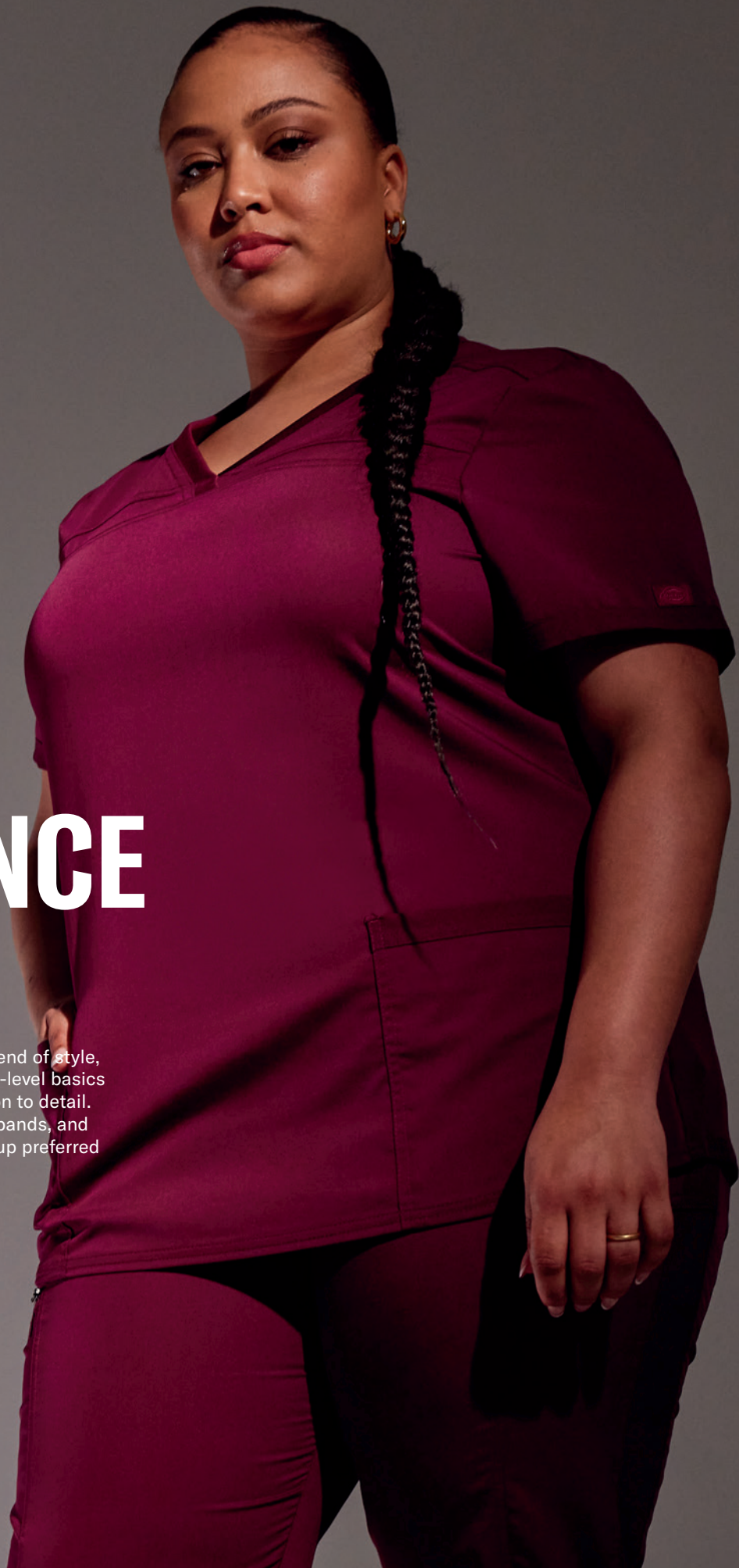
Fabric:
Brushed 55 Cotton/45 Poly Poplin

- Men's fit
- All-around elastic waistband with inside drawstring
- Zip fly with button closure
- Seven pockets: two front angled pockets, two cargo pockets, two utility pockets, back pocket
- Right cargo pocket and back pocket have hook-and-loop closure
- Three belt loops
- D-ring at right belt loop
- Straight leg, 20" opening

Available colors:

Black BLWZ	Navy NVWZ	Pewter PTWZ
Royal ROWZ	Wine WIWZ	Caribbean Blue CAWZ
Ciel CIWZ	White WHWZ	Hunter Green HUWZ
Olive OLWZ	Grey GRWZ	Dark Khaki KHIZ





BALANCE



2-WAY
STRETCH

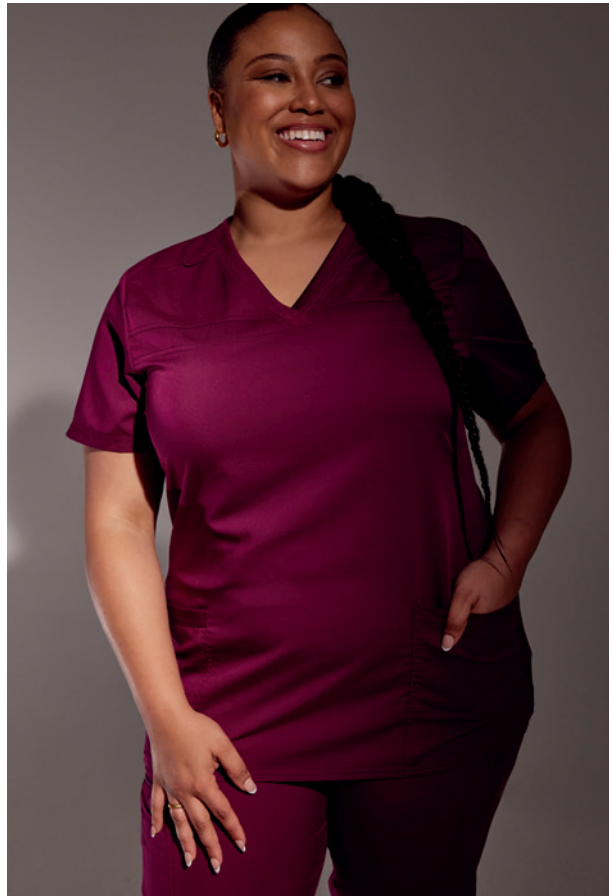


SIGNATURE
STYLING



DRAPES
PERFECTLY

Balance delivers the perfect blend of style, substance, and comfort in next-level basics with Dickies' signature attention to detail. Roomy pockets, stretchy waistbands, and trendy jackets round out a lineup preferred by the pros.



Left, CAMILLE is wearing DK870 V-Neck Top in Wine (WIN) // Bottom left, VAUGHN is wearing DK865 V-Neck Top in Navy (NAV) // Bottom right, CAMILLE is wearing DK870 V-Neck Top in Wine (WIN)

**NEW
COLOR**



**CALIBRATED
FOR COMFORT.
DESIGNED FOR
DURABILITY.**

DK875 V-Neck Top
+ DK155 Mid Rise
Jogger Pant in
Blue Jean (BJNE)



SCOTTY is wearing
DK865 V-Neck Top
+ DK224 Mid Rise
Jogger Pant in
Royal (ROY)

DK875

V-Neck Top With Rib-Knit Panels



Available colors:

Black BLK	Navy NAV	Pewter PWT
Royal ROY	Wine WIN	Caribbean Blue CAR
Ciel Blue CIE	White WHT	Hunter Green HUN
Teal Blue TLB	Galaxy Blue GAB	Heathered Navy HTNA*

Sizes:
XXS-5XL (26")

Fabric:
77 Poly/20 Rayon/3 Spandex Twill

- Contemporary fit
- Rib-knit inset at neckline
- Five pockets: two patch pockets, two side seam pockets, zipper pocket
- Shoulder and back yokes
- Bungee ID badge loop at right shoulder yoke
- Rib-knit side panels
- Shirttail hem

New Color:



DK135/P/T

Mid Rise Pull-on Pant



Available colors:

Black BLK	Navy NAV	Pewter PWT
Royal ROY	Wine WIN	Caribbean Blue CAR
Ciel Blue CIE	White WHT	

Sizes:
XXS-5XL (30")
[P] XXS-2XL (27.5")
[T] XS-2XL (33")

Fabric:
77 Poly/20 Rayon/3 Spandex Twill

- Contemporary fit
- Interior elastic waistband
- Six pockets: two front patch pockets, cargo pocket, back patch pocket
- Interior vents
- Tapered leg, 15" opening

DK870

V-Neck Top With Rib-Knit Panels



Available colors:

Black BLK	Navy NAV	Pewter PWT
Royal ROY	Wine WIN	Caribbean Blue CAR
Ciel Blue CIE		

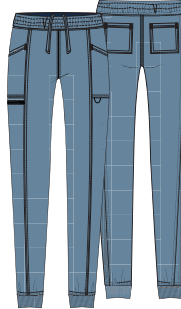
Sizes:
XXS-5XL (27")

Fabric:
77 Poly/20 Rayon/3 Spandex Twill

- Contemporary fit
- Two patch pockets
- Rib-knit neckband and back side panels
- Bungee ID badge loop
- Shirttail hem

DK155/P/T

Mid Rise Jogger Pant



Available colors:

Black BLK	Navy NAV	Pewter PWT
Royal ROY	Wine WIN	Caribbean Blue CAR
Ciel Blue CIE	Hunter Green HUN	Heathered Navy HTNA*

Sizes:
XXS-5XL (29")
[P] XXS-2XL (26.5")
[T] XS-2XL (32")

Fabric:
77 Poly/20 Rayon/3 Spandex Twill

- Contemporary fit
- Elastic waist with adjustable inside drawstring
- Front seams
- Five pockets: two front pockets, zipper pockets, two back pockets, Bungee instrument loop at zipper pocket
- Rib-knit back side panels
- Tapered leg, 8½" opening

New Color:



DK365

Zip Front Jacket



Available colors:

Black BLK	Navy NAV	Pewter PWT
--------------	-------------	---------------

Sizes:
XXS-5XL (24.5")

Fabric:
77 Poly/20 Rayon/3 Spandex Twill

- Contemporary fit
- Two welt pockets
- Rib-knit neckband, waistband, and cuffs
- Sleeve strapping

DK865

V-Neck Top



Available colors:

Black BLK	Navy NAV	Pewter PWT
Royal ROY	Caribbean Blue CAR	

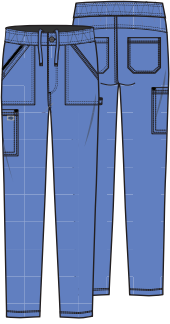
Sizes:
XS-5XL (29")

Fabric:
77 Poly/20 Rayon/3 Spandex Twill

- Men's fit
- Double chest pocket with zipper
- Rib-knit side panels and neck inset
- Bungee ID badge loop at right shoulder yoke

DK220/S/T

Mid Rise Straight Leg Pant



Available colors:

Black BLK	Navy NAV	Pewter PWT
Royal ROY	Caribbean Blue CAR	

Sizes:

XS-5XL (31.5")
[S] XS-3XL (29")
[T] S-2XL (34.5")

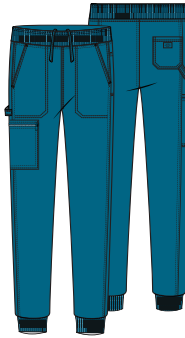
Fabric:

77 Poly/20 Rayon/3 Spandex Twill

- Men's fit
- Elastic waistband with inside drawstring
- Zip fly with button closure
- Six pockets: two front patch pockets, hidden front zipper pocket, cargo pocket, two back patch pockets
- Straight leg, 16" opening

DK224/S/T

Mid Rise Jogger Pant



Available colors:

Black BLK	Navy NAV	Pewter PWT
Royal ROY	Caribbean Blue CAR	

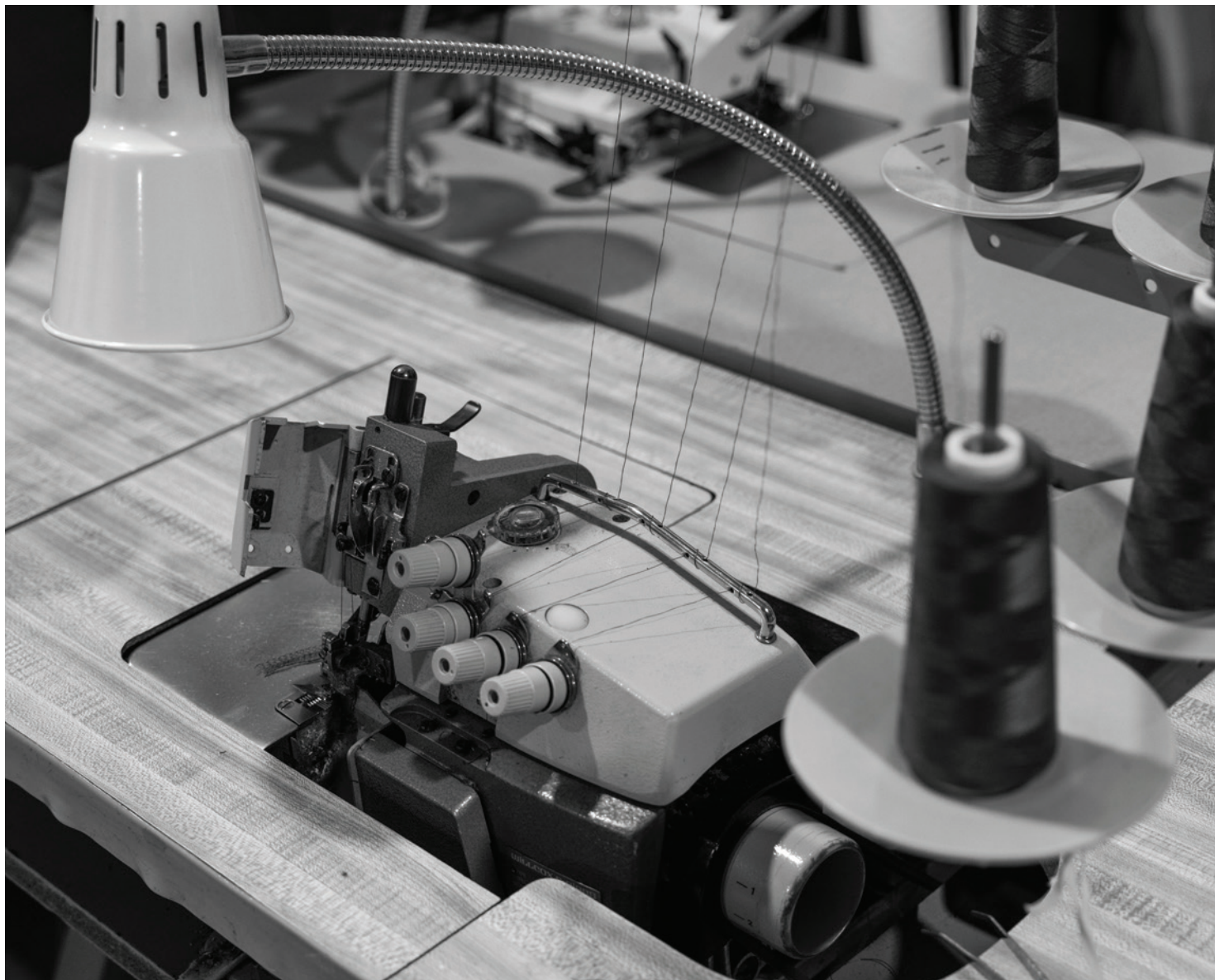
Sizes:

XS-5XL (30")
[S] XS-3XL (27.5")
[T] S-2XL (33")

Fabric:


77 Poly/20 Rayon/3 Spandex Twill

- Men's fit
- Rib-knit covered elastic waistband with inside drawstring
- Five pockets: two front pockets, cellphone pocket, zip cargo pocket, back pocket
- Utility loop
- Side panels
- Rib-knit cuffs
- Tapered leg, 10½" opening





JOCELYN is wearing
DK615 V-Neck Top
in Caribbean Blue
(CAPS)



“The first time I heard of the Dickies brand, I was out of high school in my first nursing job as a certified nursing assistant. Those were my first pair of scrubs. I loved them.”

JOCELYN
OPERATING ROOM NURSE

DYNAMIX



4-WAY
STRETCH



MOISTURE
WICKING



LIGHTWEIGHT

Inspired by athleisure, Dynamix blends superior comfort with unparalleled performance. Discover lightweight, four-way stretch fabric for maximum mobility, with moisture-wicking technology to keep you feeling fresh.



Left page, VAUGHN is wearing DK610 V-Neck Top in Navy (NAV)// Top, SCOTTY is wearing DK610 V-Neck Top in Wine (WIN) // Bottom left, SCOTTY is wearing DK610 V-Neck Top in Caribbean Blue (CAR)// Bottom right, JOCELYN is wearing DK730 V-Neck Top in Royal (ROY)



TRUE PERFORMANCE FABRIC

DK610 V-Neck Top
+ DK110 Zip Fly Cargo
Pant in Pewter (PWT)



DK730

V-Neck Top



Available colors:

Black BLK	Navy NAV	Pewter PWT
Royal ROY	Wine WIN	Caribbean Blue CAR

Sizes:
XXS-5XL (26")

Fabric:
91 Poly/9 Spandex Textured Dobby

- Contemporary fit
- Three pockets: two patch pockets, left sleeve zipper pocket
- Bungee loop at neckline
- Tonal cable-management outlet inside right pocket
- Front and back princess lines
- Shirttail hem
- Side vents

DK610

V-Neck Top



Available colors:

Black BLK	Navy NAV	Pewter PWT
Royal ROY	Wine WIN	Caribbean Blue CAR

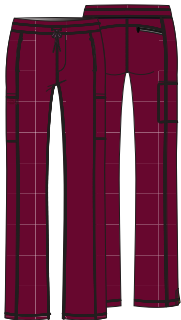
Sizes:
XS-5XL (29")

Fabric:
91 Poly/9 Spandex Textured Dobby

- Men's fit
- Rib-knit neckband
- Bungee loop at neckline
- Two pockets: welt chest pocket, sleeve zipper pocket
- Front and back yokes
- Stitch detailing on back

DK130/P/T

Mid Rise Drawstring Pant



Available colors:

Black BLK	Navy NAV	Pewter PWT
Royal ROY	Wine WIN	Caribbean Blue CAR

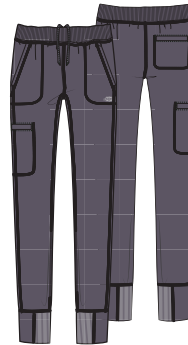
Sizes:
XXS-5XL (30.5")
[P] XXS-2XL (28")
[T] XS-2XL (33.5")

Fabric:
91 Poly/9 Spandex Textured Dobby

- Contemporary fit
- Interior elastic waistband with drawstring
- Five pockets: two front in-seam pockets, two cargo pockets, zip-closure back pocket
- Side panels
- Side vents
- Straight leg, 17" opening
- Shirttail hem

DK040/S/T

Natural Rise Jogger



Available colors:

Black BLK	Navy NAV	Pewter PWT
Royal ROY	Wine WIN	

Sizes:
XS-5XL (30")
[S] XS-3XL (27.5")
[T] S-2XL (33")

Fabric:
91 Poly/9 Spandex Textured Dobby

- Men's fit
- Rib-knit covered elastic waistband with inside drawstring
- Four pockets: two front angled pockets, back pocket, cargo pocket
- Tapered leg, 10" opening

DK185/P/T

Natural Rise Jogger Pant



Available colors:

Black BLK	Navy/Black NAVBLK	Pewter PWT
Royal ROY	Wine WIN	Caribbean Blue CAR

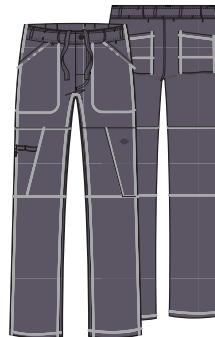
Sizes:
XXS-3XL (28.5")
[P] XXS-2XL (26")
[T] XS-2XL (31.5")

Fabric:
91 Poly/9 Spandex Textured Dobby

- Contemporary fit
- Knit waistband with inside drawstring
- Six pockets: two front patch pockets, two cargo pockets, two back welt pockets
- Space-dyed trim at waist and pockets
- Rib-knit cuffs
- Tapered leg, 9½" opening

DK110/S/T

Zip Fly Cargo Pant



Available colors:

Black BLK	Navy NAV	Pewter PWT
Royal ROY	Wine WIN	Caribbean Blue CAR

Sizes:
XS-5XL (32")
[S] XS-3XL (29.5")
[T] XS-3XL (35.5")

Fabric:
91 Poly/9 Spandex Textured Dobby

- Men's fit
- Elastic waistband with inside drawstring
- Zip fly with button closure
- Six pockets: two front pockets, two cargo pockets, two back patch pockets
- Right cargo pocket has a zipper closure and instrument loops
- Hidden inseam gusset
- Straight leg, 18" opening

EDS PRINTS

A new slate of prints for the hardworking healthcare pro who wants to mix up their look, with textures and patterns designed to complement our most popular core colors and seasonal fashion shades.

DK853 Ditsy Bloom Camo (DBCM)



Sizes:
XS-3XL (26")

Fabric:
52 Recycled Poly/40 Poly/
8 Spandex Poplin

- Contemporary fit
- Two pockets: side angled pockets
- Side vents
- Signature woven label

Coordinating colors:



DK881 Shibori Stripes (SHSE)



Sizes:
XS-5XL (26")

Fabric:
52 Recycled Poly/40 Poly/
8 Spandex Poplin

- Contemporary fit
- Two pockets: side angled pockets
- Side vents
- Signature woven label

Coordinating colors:



DK616 Sunflower Doodle (SUDL)



Sizes:
XXS-5XL (26")

Fabric:
52 Recycled Poly/40 Poly/
8 Spandex Poplin

- Contemporary fit
- Two patch pockets, right with pen slot
- Shoulder yokes
- Instrument loops with snap at right shoulder
- Back princess seams
- Side vents

Coordinating colors:



DK717 Crosshatch Cool (CRHC)



Sizes:
XS-5XL (27")

Fabric:
52 Recycled Poly/40 Poly/
8 Spandex Poplin

- Modern Classic fit
- Two patch pockets
- Side vents

DK513 Crosshatch Cool (CRHC)



Size:
OS

Contrast:
Pewter

Coordinating colors:

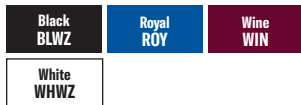


DK876

Street Art (STRS)



Coordinating colors:



Sizes:
XXS-5XL (26")

Fabric:
52 Recycled Poly/40 Poly/
8 Spandex Poplin

Contrast:
Black ribbing

- Contemporary fit
- Rib-knit insets at neckline
- Two patch pockets
- Bust darts
- Shirttail hem
- Side vents

DK881

Go Outside (GOSD)



Coordinating colors:



Sizes:
XS-3XL (26")

Fabric:
52 Recycled Poly/40 Poly/
8 Spandex Poplin

- Contemporary fit
- Two pockets: side angled pockets
- Side vents
- Signature woven label

DK616

Marble Mood (MBMD)



Sizes:
XS-3XL (26")

Fabric:
52 Recycled Poly/40 Poly/
8 Spandex Poplin

- Contemporary fit
- Two patch pockets, right with pen slot
- Shoulder yokes
- Instrument loops with snap at right shoulder
- Back princess seams
- Side vents

DK704

Bold Batik (BDBK)



Coordinating colors:



Sizes:
XS-5XL (27")

Fabric:
97 Cotton/3 Spandex Poplin

- Modern classic fit
- Two pockets: patch pockets
- Side vents
- Signature woven label

DK514

Marble Mood (MBMD)



Size:
OS

Contrast:
Pewter

Available colors:



DK616

Splatter Stripes (SPKA)



Coordinating colors:



Sizes:
XXS-3XL (26")

Fabric:
52 Recycled Poly/40 Poly/
8 Spandex Poplin

- Contemporary fit
- Two patch pockets, right with pen slot
- Shoulder yokes
- Instrument loops with snap at right shoulder
- Back princess seams
- Side vents

DK617

Tonal Palms (TNPA)



Coordinating colors:



Sizes:
XS-3XL (26")

Fabric:
97 Cotton/3 Spandex Poplin

- Contemporary fit
- Two pockets: patch pockets, right with pen slot
- Side vents
- Instrument loop

DK876

Organic Tie Dye (ORTD)



Coordinating colors:



Sizes:
XXS-5XL (26")

Fabric:
52 Recycled Poly/40 Poly/
8 Spandex Poplin

Contrast:
Black ribbing

- Contemporary fit
- Rib-knit insets at neckline
- Two patch pockets
- Bust darts
- Shirrtail hem
- Side vents

DK866

Cut Out Camo (CUMO)



Coordinating colors:



Sizes:
XS-5XL (29")

Fabric:
52 Recycled Poly/40 Poly/
8 Spandex Poplin

- Rib-knit insets at neckline
- Chest pocket
- Tuckable top

DK513

Cut Out Camo (CUMO)



Size:
OS

Contrast:
Pewter ribbing



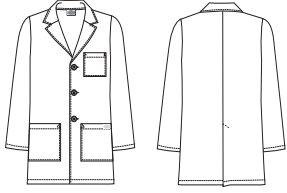




LAB COATS

Make it your business to look (and feel) official in an expertly crafted lab coat that is the ultimate power piece. Dickies' iconic design cred is front and center in a line that masterfully blends style and science.

81404
DWHZ

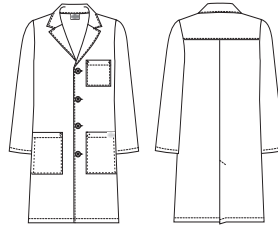


Sizes:
XS-5XL (31")

Fabric:
Poly/Cotton Poplin

- Men's fit
- Three outside pockets
- One inside pocket

83403
DWHZ



Sizes:
XS-5XL (40")

Fabric:
Poly/Cotton Poplin

- Unisex fit
- Three outside, side entry pockets

82401
DWHZ

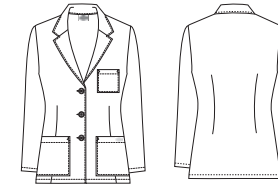


Sizes:
XS-3XL (37")

Fabric:
Brushed Cotton/Poly Twill

- Contemporary fit
- Four outside pockets
- Sewn-down back belt detail

84401
DWHZ

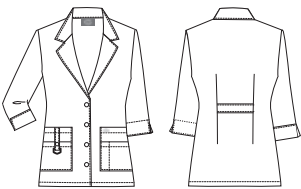


Sizes:
XS-3XL (28")

Fabric:
Poly/Cotton Poplin

- Modern Classic fit
- Three outside pockets

82402
DWHZ



Sizes:
XS-3XL (30")

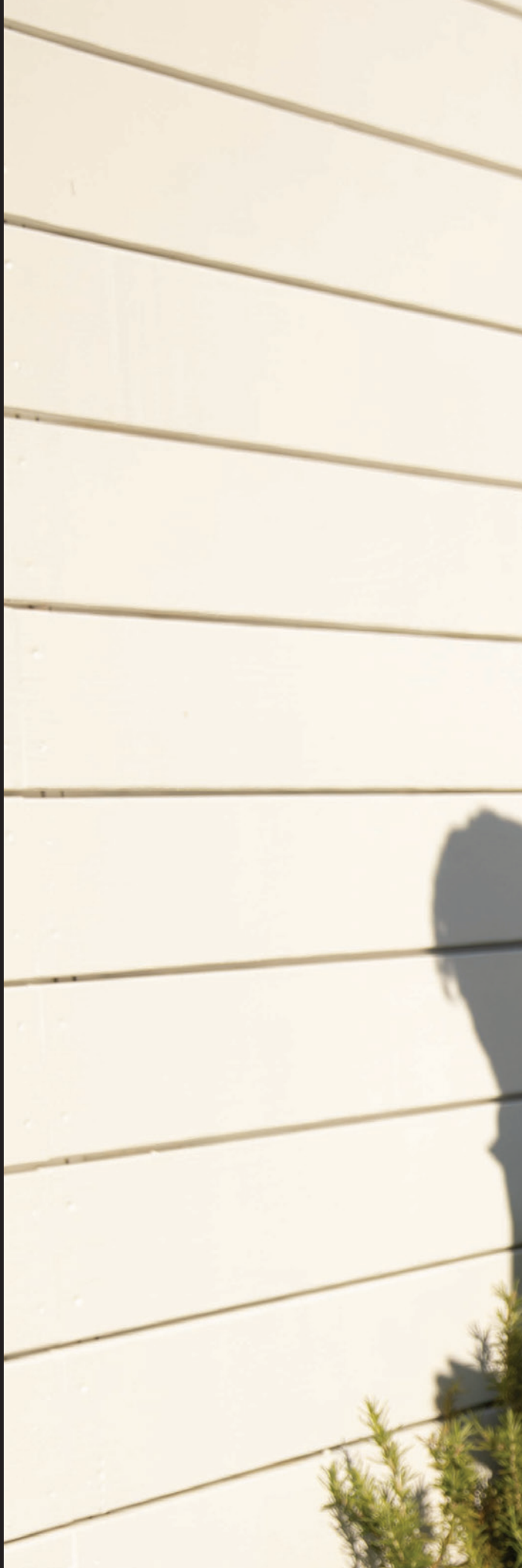
Fabric:
Brushed Cotton/Poly Twill

- Contemporary fit
- Four outside pockets
- Sewn-down half back belt detail



“ I first got introduced to Dickies when I lived in Philadelphia. They are big on uniforms. I saw a lot of them in the streets. ”

VAUGHN
DENTAL ASSISTANT





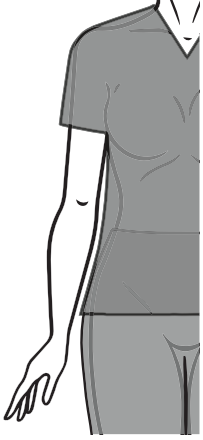
VAUGHN is wearing
DK645 V-Neck Top + DK015
Natural Rise Drawstring
Pant in Hunter Green
(HNPS)

GARMENT FIT GUIDE

WOMEN'S TOP

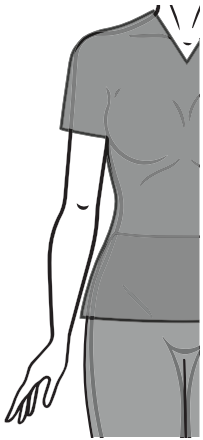
Modern Classic

- Contours the body with ease



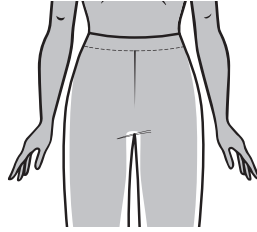
Contemporary

- Contoured to your curves

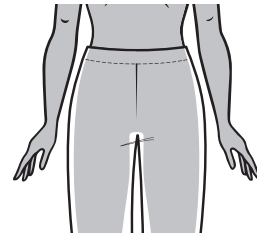


WOMEN'S WAIST

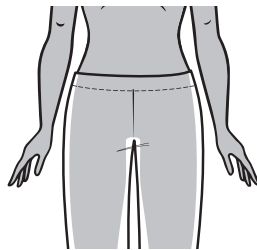
Natural Rise



Mid Rise



Low Rise

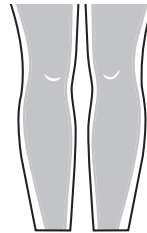


WOMEN'S LEG

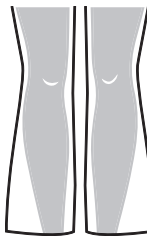
Jogger



Tapered

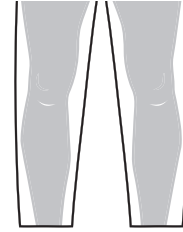


Flare

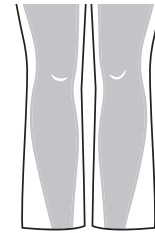


WOMEN'S LEG

Straight



Moderate Flare
Boot Cut



MEN'S TOP

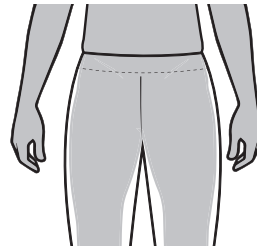
Classic

- Relaxed fit for the ultimate comfort



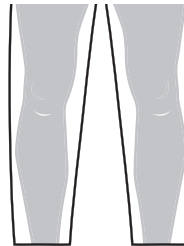
MEN'S WAIST

Natural Rise



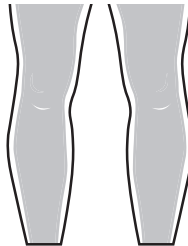
MEN'S LEG

Classic



MEN'S LEG

Athletic



INDEX

STYLE #	COLOR / PRINT	PAGES(S)
81006/T	SOLID	17
81404	SOLID	35
81906	SOLID	17
82401	SOLID	35
82402	SOLID	35
83006/S/T	SOLID	17
83403	SOLID	35
83706	SOLID	16
84401	SOLID	35
85906	SOLID	16
86106/P/T	SOLID	16
86206/P/T	SOLID	16
86306	SOLID	16
86706	SOLID	16
DK005/P/T	SOLID	10
DK010/P/T	SOLID	10
DK015/S/T	SOLID	11
DK019/S/T	SOLID	10
DK040/S/T	SOLID	29
DK065/P/T	SOLID	9
DK110/S/T	SOLID	29
DK130/P/T	SOLID	29
DK135/P/T	SOLID	22
DK155/P	SOLID	22
DK185/P/T	SOLID	29
DK220/S/T	SOLID	23
DK223/S/T	SOLID	11
DK224/S/T	SOLID	23
DK241/P	SOLID	9
DK305	SOLID	10

STYLE #	COLOR / PRINT	PAGES(S)
DK341	SOLID	9
DK342	SOLID	9
DK365	SOLID	22
DK502	SOLID	11
DK513	CUMO	32
DK514	MBMD	31
DK610	SOLID	29
DK615	SOLID	9
DK616	MBMD	31
DK616	SPKA	31
DK616	SUDL	30
DK617	TNPA	31
DK619	SOLID	10
DK625	SOLID	10
DK635	SOLID	11
DK641	SOLID	9
DK645	SOLID	11
DK704	BDBK	31
DK717	CRHC	30
DK730	SOLID	29
DK853	DBCM	30
DK865	SOLID	22
DK866	CUMO	32
DK870	SOLID	22
DK875	SOLID	22
DK876	ORTD	32
DK876	STRS	31
DK881	GOSD	31
DK881	SHSE	30



Careismatic Brands
1119 Colorado Ave., Santa Monica, CA 90401
Customer Care: 800.283.7272
M - F, 6 am to 4 pm PST
Fax: 888.283.7271
Email: orderinginquiry@careismatic.com
Order on CBI Central: cbicentral.com

SATISFACTION GUARANTEED
Since 1922, Dickies quality has been built into every product. We will gladly replace this product if you are not satisfied for any reason. Go to www.dickiesmedical.com for more details. Produced under license by Careismatic Brands.

Need digital assets? Email us at digitalassets@careismatic.com

8640/JAN24



MEDICAL